



310 George Washington Highway
Suite 100
Smithfield, Rhode Island
0 2 9 1 7
T 4 0 1 - 2 3 2 - 5 0 1 0
F 4 0 1 - 2 3 2 - 5 0 8 0
WWW.ARCH-ENG.COM

DISCLAIMER

OWNERSHIP AND USE OF DOCUMENTS, DRAWINGS AND SPECIFICATIONS ARE INSTRUMENTS OF PROFESSIONAL SERVICE AND SHALL REMAIN THE PROPERTY OF THE ARCHITECT. THESE DOCUMENTS ARE NOT TO BE USED, IN WHOLE OR IN PART, FOR ANY OTHER PROJECTS OR PURPOSES OR BY ANY OTHER PARTIES THAN THOSE PROPERLY AUTHORIZED BY CONTRACT WITHOUT THE EXPRESS WRITTEN AUTHORIZATION OF THE ARCHITECT.



REVISIONS

[illegible]

FOR PERMIT ONLY

PROJECT TITLE



100 Crossing Blvd, Framingham, Massachusetts

STORE #
V0636

22905 S.R. 7

BOCA RATON, FL
Palm Beach County

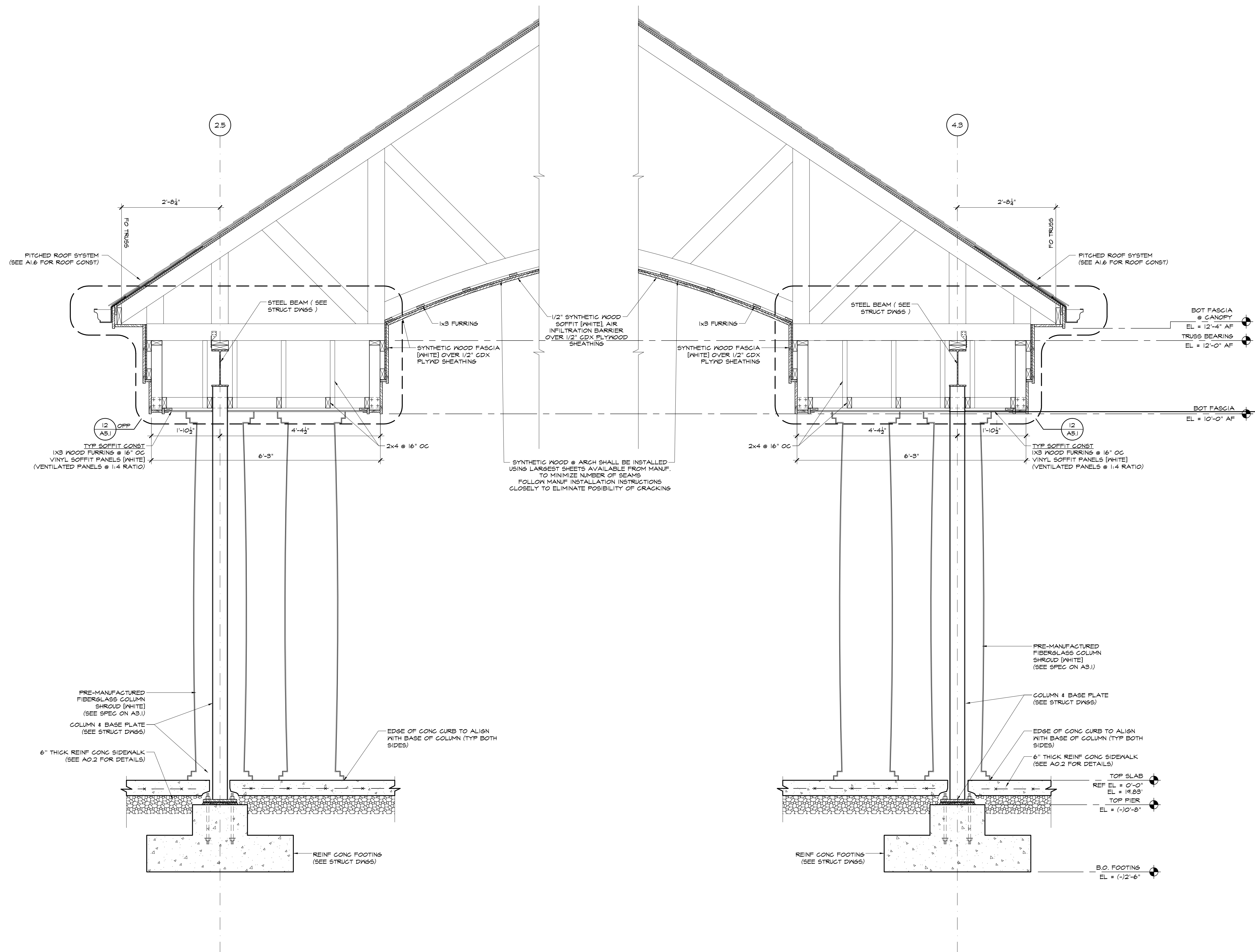
DRAWING TITLE

WALL SECTIONS

<i>DATE</i> AUG 29, 2012	<i>PROJ NO</i> 11117
<i>DRAWN BY</i> JD/BB	<i>CHECKED BY</i> AZ

DRAWING NUMBER

A4.6



SECTION @ ENTRY CANOPY
SCALE: 3/4" = 1'-0"